



TABLE OF CONTENTS

| | |
|----------------------------|----|
| SYSTEM REQUIREMENTS | 2 |
| MEDIA FORMAT | 2 |
| INTRODUCTION | 3 |
| BUTTONS | 4 |
| SETTING | 6 |
| TV..... | 7 |
| TELETEXT..... | 8 |
| GUIDE/CHANNEL LIST | 9 |
| SCHEDULED RECORDING | 10 |
| RADIO (FM/DAB) | 11 |
| FILES..... | 13 |
| SHORTCUT SUPPORT | 14 |
| FOR MORE INFORMATION | 14 |



SYSTEM REQUIREMENTS

- Windows XP SP2/Vista/Win7/Win 8
- Pentium 4 1.8GHZ or above
- 512 MB free hard drive space for program installation
- 512 MB RAM (1GMB DDR RAM recommended)
- 16-bit color display at 800x600 (32 MB video memory with DirectX 3D support recommended)
- DirectX 9 or above
- Hardware video acceleration to support MPEG 4 H264 HDTV (High definition TV), the minimum requirement is one of the following video cards with DXVA2 (hardware video acceleration) enabled:
 - AMD (ATI) Radeon HD2000 or above
 - NVIDIA GeForce 500 or above
 - Intel HD 2000 or above

MEDIA FORMAT

- Video: MPEG-1/2, MPEG-4 H.264 (ISO/IEC 14496-10)
- Audio: MPEG-1/2, Dolby AC3/E-AC3 (external decoder), MPEG-4 HE-AAC @L2 (ADTS/LATM)
- Recording format: mpeg 2 transport stream with .mpg extension.



INTRODUCTION

Welcome to using TVR, a multi-source digital TV application that allows you to access and work with recorded TV programs, radio and DAB and teletext on your computer or laptops.

Features:

- DVB-T, DVB-T2 and DVB-C
- DAB/DAB+, FM
- Freeview HD and EPG
- Support MPEG4 H264 HD/SD with hardware video acceleration (DXVA2)
- Support Windows gesture control on touch panel
- Clear 10-foot user interface with big buttons for easier operation
- Multiple language support
- Remote controller
- Channel Scan
- Support hibernate/sleep and resume for scheduled recording
- Snapshot
- Real-time or scheduled program recording
- Playback files with random seek and fast forward/rewind
- Recorded file menu
- Multi-language Subtitle
- Multi-language audio language
- Teletext
- Electronic Program Guide
- Time shifting

Before using your TV dongle, please follow the steps:

1. Connect dongle and Computer / laptop
2. Install AMDVB-T2 driver
3. Install TVR application

BUTTONS



The toolbar at the bottom of the screen features standard audio/video playback controls (Play/Pause, Stop, and Record) plus Volume and Channel controls. Special controls for TV playback only appear when necessary.



1. **Guide** -The slide-in channel list window lets you view available TV/Radio channels and select a specific channel. Click a channel to get Electronic Program Guide (EPG) of that channel, Click an EPG item to get detail information about a program.



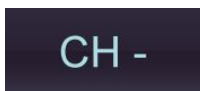
2. **Files**-Click this button to open the captured images and Recorded TV.



3. **Grab Image** -When watching TV shows: Click this button to take a snapshot of the current screen. The captured image will be saved in the "My Documents/ TVR/Capture" folder by default.



4. Click this button to record the TV Show: click to start / stop the recording. The captured video will be saved in the "My Documents/ TVR/Capture" folder by default.



5. When watching TV or Playing Radio: Use these buttons to switch to the previous channel.



6. When watching TV or Playing Radio: Use these buttons to switch to the next channel.



7. **Recall** -Click to go back to the previously selected channel.



8. Mute button: Press to turn off /on the sound output.



9. Volume- Increase / decrease the sound level.



10. Main menu: Click to access the main menu.



11. Setting: Click this button to get a pop menu for scan channel, source select, video quality and TV Schedule Recording settings.



12. Live: Press to directly access live TV or return to live from any slide-in windows.

SETTING

This window let you access to TV/DAB/FM options



Scan TV / Radio channels

Let you view and edit the settings for TV/ Radio channels. Follow the steps below to find TV/Radio channels.

1. Input Source: Select video / audio source device
2. Scan window: Select your region in scan window
3. Scan window: Click "Scan" to scan for available channels



TV

To watch TV, please follow the steps below:

1. Scan the TV channels in SETTINGS.
2. When it completes scanning, you can use remote controller to switch channels, or click channel controls (CH+/ CH- button) in the toolbar at the bottom of the screen.
3. Close the TV channel list by clicking button “<<” (1) or “LIVE” (2)

Guide - View the TV channel list. Click a channel for EPG

Reorder Channel List - You can use ctrl+up arrow, ctrl+down arrow to move highlighted item on Guide/Channel list.

Schedule - Functions to record TV shows.



TELETEXT

Click menu/Teletext to get teletext window.

This window let you watch the teletext that offers a range of text-based information, typically including news, weather and TV schedules provided by broadcasters.

Red, Green, Yellow, Blue button: Jump to page number indicated on each teletext page

P-, P+: Decrease, Increase page number.

Home: Return to the home page 100, which is usually a link to the main Index page.



GUIDE/CHANNEL LIST

The Guide button is a multi-function button, and it firstly brings up a channel list window. This window let you view the channel list and select a specific channel, and then you can close or click a channel for 7-day electronic program guide (EPG).

Click any EPG item for detail information.

Click '+' button on detail information window to add recording schedule for a selected TV program.



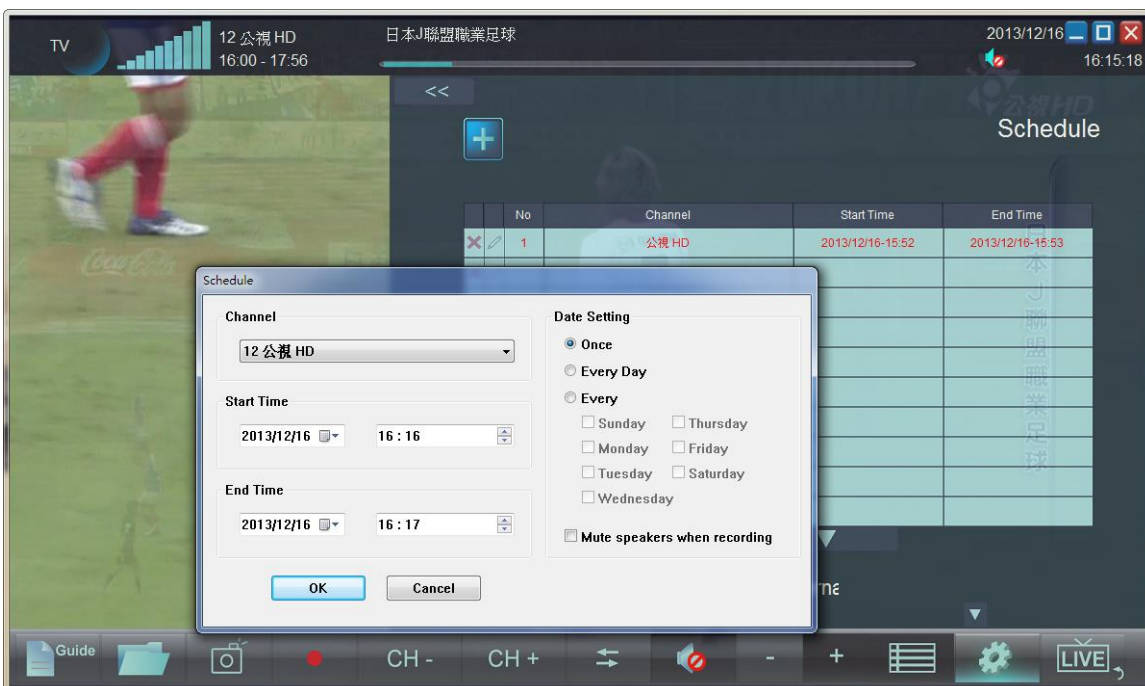
SCHEDULED RECORDING

Click Setting/Schedule for scheduled recording window.

This window lets you manage the schedule of TV recordings. TVR will monitor the schedule and activate recording automatically right at the correct day/time.



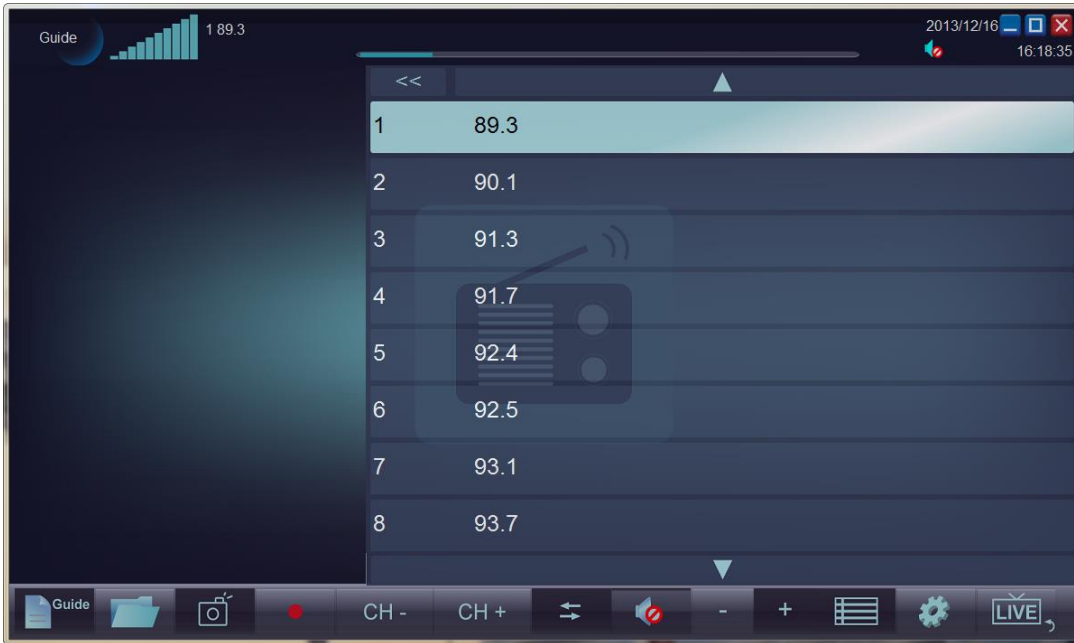
Add a new schedule for recording by clicking the (+ button) of the screen.



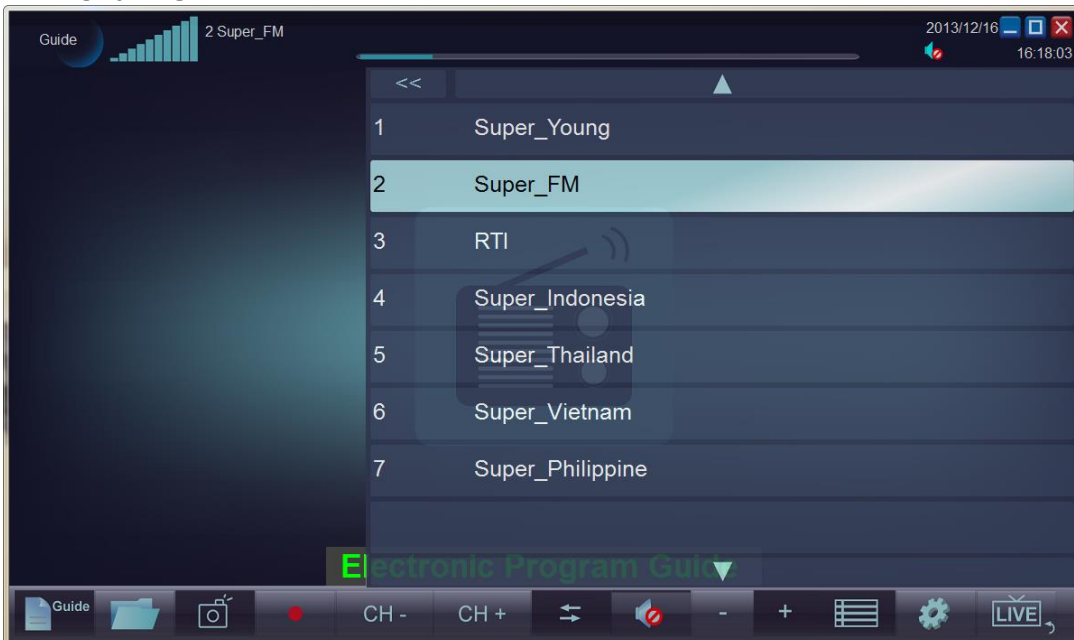
RADIO (FM/DAB)

You can switch the device to FM or DAB mode in menu of SETTING/Input Source, and listen to local radio on your computer/laptop.

FM Channel:



DAB Channel:





Reorder Channel List - Press ctrl+up arrow, ctrl+down arrow to move highlighted item on Guide/Channel list.

Edit channel list – Right click channel frequency to get editing popup menu. You can rename or delete a channel within Guide/Channel list

Volume - Increase or decrease the sound level.

CH (+/-) - Use the buttons to switch the next/previous channel. You can also press the number buttons to the desired channel.

Scan Channels - Scan for available channels. Note that FM radio is analog broadcast, Some channels may be incorrectly detected due to noise interference, you can use edit menu to delete it.

FILES

Click Files to open the captured images and Recorded TV.

In the file list, the captured images and Recorded TV will be arranged by date, and then you can play or right click to delete items.





SHORTCUT SUPPORT

The following remote control buttons and matching keyboard shortcuts can be used within TVR:

| Function | Remote Button | Keyboard |
|-----------------------------|---------------|--------------------------------|
| 0-9 | 0-9 | 0-9 |
| About TVR (Version Info.) | | Ctrl+a |
| Advanced Setup(Expert Mode) | | e |
| Close | Power | Ctrl+x |
| File Play/ Pause | | Space |
| Full Screen/Window | Full Screen | w |
| Guide/Channel list | Favorite | ctrl+e |
| Grab Image | | g |
| Left, Right, Up, Down | | Left, Right, Up, Down arrow |
| Mute | Mute | m |
| Next Channel/File | CH down arrow | Page Up or n |
| Next Audio Language | | Ctrl+l |
| Next Subtitle | | Ctrl+s |
| Open File | | Ctrl+o |
| Previous Channel/File | CH up arrow | Page Down or p |
| Record | | r |
| Recall | | l |
| Reorder Channel List | | ctrl+up arrow, ctrl+down arrow |
| Select | | Enter |
| Timeshift and Pause | | t |
| Timeshift stop | | s |
| Teletext | | Ctrl+t |
| TV | | v |
| Volume Up | Vol+ | + |
| Volume Down | Vol- | - |

FOR MORE INFORMATION

Please check the information in AstroMeta Official website: <http://www.astrometa.com.tw/>